

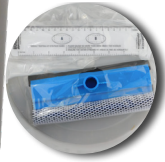
Product Datasheet

HU-SP-DELUGE-TESTER

Deluge Tester Kit

To facilitate weekly testing of shower equipment as required by EN and ANSI standards, Hughes recommend the use of a deluge tester. Water is directed into a container via a funnel to capture the water, allowing maintenance operative to measure the delivery from the shower and ensure floors, and themselves, are kept dry.

The deluge test kit also includes an eye wash gauge to test the spray pattern of an eye wash unit when performing a weekly activation, as well as a squeegee to clean the equipment following inspection.



Specifications

MATERIALS OF CONSTRUCTION

FUNNEL	Rip-stop material
FUNNEL SUPPORT COLLAR	Aluminium zinc metal
FUNNEL CONNECTING BRACKET	Stainless steel
TELESCOPIC HANDLE	Aluminium with rubber handle grip
R-CLIP	Steel zinc plated
25 LITRE CONTAINER	Plastic with volume measurements

DIMENSIONS

FUNNEL	2000mm long 290mm diameter upper opening 130mm diameter lower opening
25 LITRE CONTAINER	415mm high 335mm diameter

